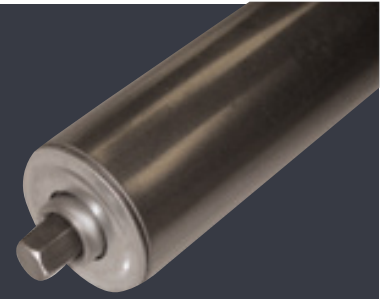


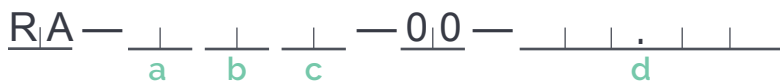
1-5/8" Ø X 16 GA. SERIES



- Capacity:** Up to 310 lbs. (See chart below)
- Minimum B.F.R.:** 2"
- Maximum B.F.R.:** 60" (Contact Sales if larger B.F.R. required).
- Bearings:** Replaceable
- Construction:** Press fit bearing retention.
- Restrictions:** Rollers under 7' B.F.R. require a cottered axle

For more information on further roller options or to place an order, contact our Order Desk!

Steel Roller



a

TUBE

| Code | Description |
|------|---|
| 65 | 1-5/8" Ø x 16 Ga. Natural Finish (STD.) |
| 6Y | 1-5/8" Ø x 16 Ga. Zinc Plated |

b

BEARING

| Code | Description |
|------|-----------------------------------|
| 20 | Grease packed BG-20 (STD.) |
| 25 | High Speed & Quiet BG-25 |
| 45 | High Capacity Grease Packed BG-45 |

c

AXLE

| Code | Description |
|------|---|
| 8W | 7/16" Hex, Spring Loaded, Natural Finish (STD.) |
| gB | 7/16" Hex, Cottered, Natural Finish |
| gG | 7/16" Hex, D+T 5/16-18 UNC, Natural Finish |
| gM | 7/16" Hex, Spring Loaded, Zinc Plated |
| gS | 7/16" Hex, Cottered, Zinc Plated |
| gX | 7/16" Hex, D+T 5/16-18 UNC, Zinc Plated |

d

BETWEEN FRAME RAIL (B.F.R.)

Measurement between the inside of the two frame rails
Eg. For a 14-1/4" B.F.R measurement, enter 014 250

| B.F.R (inches) | 6 | 9 | 15 | 21 | 27 | 33 | 39 | 45 | 51 | 57 | 60 |
|-----------------------|-----|-----|-----|-----|-----|-----|-----|-----|-----|-----|-----|
| Steel Roller Capacity | 310 | 310 | 310 | 310 | 290 | 234 | 196 | 168 | 146 | 129 | 122 |

*interpolate for intermediate B.F.R's