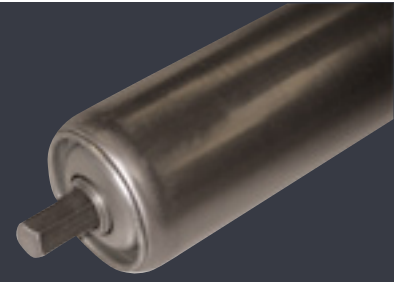


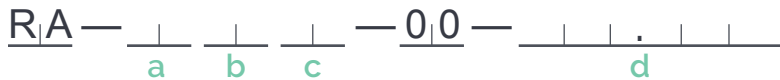
1.9" Ø X 16 GA. SERIES



- Capacity:** Up to 260 lbs. (See chart below)
- Minimum B.F.R.:** 4"
- Maximum B.F.R.:** 60" (Contact Sales if larger B.F.R. required)
- Bearings:** Non-Replaceable
- Construction:** Formed end bearing retention
- Restrictions:** Rollers under 7" B.F.R. require a cottered axle

For more information on further roller options or to place an order, contact our Order Desk!

Steel Roller



a

TUBE

Code	Description
9A	1.9" Ø x 16 Ga. Natural Finish (STD.)
9F	1.9" Ø x 16 Ga. Zinc Plated

b

BEARING

Code	Description
52	Grease packed BG-40 (STD.)

c

AXLE

Code	Description
8W	7/16" Hex, Spring Loaded, Natural Finish (STD.)
9B	7/16" Hex, Cottered, Natural Finish
9G	7/16" Hex, D+T 5/16-18 UNC, Natural Finish
9M	7/16" Hex, Spring Loaded, Zinc Plated
9S	7/16" Hex, Cottered, Zinc Plated
9X	7/16" Hex, D+T 5/16-18 UNC, Zinc Plated

d

BETWEEN FRAME RAIL (B.F.R.)

Measurement between the inside of the two frame rails
Eg. For a 14-1/4" B.F.R measurement, enter 014 250

B.F.R (inches)	4	9	15	21	27	33	39	45	51	57	60
Steel Roller Capacity	260	260	260	260	243	204	164	141	125	108	101

*interpolate for intermediate B.F.R's