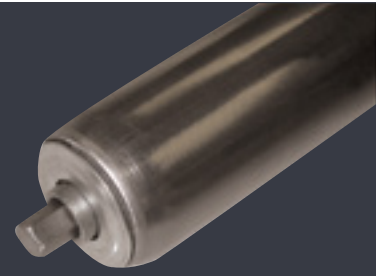


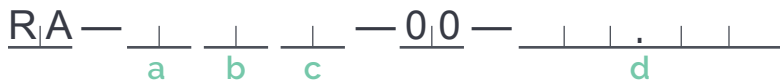
1.9" Ø X 9 GA. SERIES



- Capacity:** Up to 310 lbs. (See chart below)
- Minimum B.F.R.:** 4"
- Maximum B.F.R.:** 63" (Contact Sales if larger B.F.R. required).
- Bearings:** Replaceable
- Construction:** Press fit bearing retention
- Restrictions:** Rollers under 7" B.F.R. require a cottered axle

For more information on further roller options or to place an order, contact our Order Desk!

Steel Roller



a

TUBE

Code	Description
EA	1.9" Ø x 9 Ga. Natural Finish (STD.)
EF	1.9" Ø x 9 Ga. Zinc Plated
gC	1.9" Ø x 0.2 Wall TK PVC Pipe

b

BEARING

Code	Description
20	Grease packed BG-20 (STD.)
25	High Speed & Quiet BG-25
37	FR - 1625 - 7HDS, Miller
45	High Capacity Grease Packed BG-45
47	Dust Resistant BG-47 c/w Shot Guard

c

AXLE

Code	Description
8W	7/16" Hex, Spring Loaded, Natural Finish (STD.)
gB	7/16" Hex, Cottered, Natural Finish
gG	7/16" Hex, D+T 5/16-18 UNC, Natural Finish
gM	7/16" Hex, Spring Loaded, Zinc Plated
gS	7/16" Hex, Cottered, Zinc Plated
gX	7/16" Hex, D+T 5/16-18 UNC, Zinc Plated

d

BETWEEN FRAME RAIL (B.F.R.)

Measurement between the inside of the two frame rails
Eg. For a 14-1/4" B.F.R measurement, enter 014 250

B.F.R (inches)	4	9	15	21	27	33	39	45	51	57	63
Steel Roller Capacity	310	310	310	305	287	230	191	162	140	122	108

*interpolate for intermediate B.F.R's