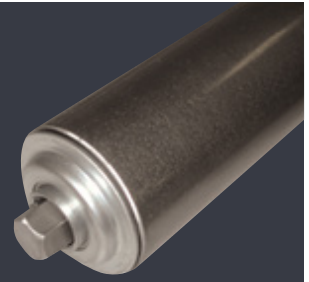


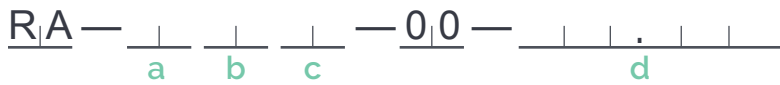
# 2-1/2" Ø X 11 GA. SERIES



- Capacity:** Up to 610 lbs. (See chart below)
- Minimum B.F.R.:** 3"
- Maximum B.F.R.:** 72" (Contact Sales if larger B.F.R. required)
- Bearings:** Replaceable
- Construction:** Press fit bearing retention
- Restrictions:** Rollers under 7" B.F.R. require a cottered axle

For more information on further roller options or to place an order, contact our Order Desk!

## Steel Roller



**a**

### TUBE

Code	Description
PA	2-1/2" Ø x 11 Ga. Natural Finish (STD.)
PF	2-1/2" Ø x 11 Ga. Zinc Plated

**b**

### BEARING

Code	Description
61	Grease packed (STD.)
65	Grease Sealed Pressure Lubricated BG-65
70	Precision BG-70
67	Dust Resistant BG-67 c/w Shot Guard

**c**

### AXLE

Code	Description
FA	11/16" Hex, Spring Loaded, Natural Finish (STD.)
FF	11/16" Hex, Cottered, Natural Finish
FL	11/16" Hex, D+T (3/8-16 UNC), Natural Finish
FR	11/16" Hex, Spring Loaded, Zinc Plated
FW	11/16" Hex, Cottered, Zinc Plated
GB	11/16" Hex, D+T (3/8-16 UNC), Zinc Plated.

**d**

### BETWEEN FRAME RAIL (B.F.R.)

Measurement between the inside of the two frame rails  
Eg. For a 14-1/4" B.F.R measurement, enter 014 250

B.F.R (inches)	3	9	15	21	27	33	39	45	51	57	63	69	72
Steel Roller Capacity	610	610	610	610	610	610	610	597	596	586	526	476	455

\*interpolate for intermediate B.F.R's